



NIMBUS
THE PALM VILLAGE
YAMUNA EXPRESSWAY
Sector 22A, Yamuna Expressway



NIMBUS THE PALM VILLAGE

YAMUNA EXPRESSWAY
Sector 22A, Yamuna Expressway

Project RERA Reg. no. - UPRERAPRJ558356/04/2024
RERA Website - <https://www.up-rera.in>
Collection Account No. - 42652223489
Collection A/c. Title - IITL-NIMBUS THE PALM VILLAGE COLLECTION A/C
IFSC Code - SBIN0005222
Name of the Bank - State Bank Of India
Branch Name - Noida, Sector-61
Branch Address - D211/1, Sector-61, Noida-201301
Project Launch Date - 17-04-2024



ARTISTIC IMPRESSION



THE NIMBUS GROUP LEGACY

32 YEARS OF TRUST

12

MILLION SQ.FT.

12

PROJECTS

8500+

HAPPY CUSTOMERS



From The Chairman's Desk



Mr. Bipin Agarwal
Chairman, Nimbus Group

“

Our strength lies in the happiness of our employees and appreciation from customers, driving our commitment to building a harmonious business. Real estate corporations, crucial in modern society, serve as community backbones. We prioritize social responsibility, focusing on green and sustainable practices to exemplify a happy business and ensure customer security.

As a pioneer in North India, we've contributed significantly to Noida, Greater Noida, and Expressway's development over three decades. Our success is rooted in competence, competitiveness, timely delivery, and high-quality standards. Customer satisfaction is paramount through efficient management and excellent workmanship.

Our goal is to create value for shareholders, communities, and the economy. Proud of our past and passionate about the future, we commit to excellence, adapt to changes, and overcome challenges through better management and construction techniques. We look forward to continued success with our partners in the years ahead.

”

From The Desk of Chief Business Officer

“

At Nimbus, we are driven by a profound desire to offer a robust infrastructure with world-standard innovations. Our Hotels in Bengaluru & Delhi stand as a testimony to our expanding horizons, promising a blend of luxury and warm hospitality.

NIMBUS isn't just in the business of constructing buildings. We are meticulously crafting the house of your dreams that you will cherish forever. We, at Nimbus, are ceaselessly evolving the pinnacle of world-class standards.

”



Mr. Sahil Agarwal
Chief Business Officer, Nimbus Group



Mary Kom

Nimbus Group x Mary Kom Where Grit Meets Grandeur!

The Nimbus Group is proud to welcome Mary Kom, an emblem of dedication, hard work, and an unwavering commitment to excellence, as our Brand Ambassador. Her legendary status in the sporting world mirrors our ethos in the realm of real estate development. Like Mary, we are relentless in our pursuit of excellence, crafting each project with the same tenacity and spirit that has defined her illustrious career.

Join us as we forge a future built on the foundations of perseverance and dedication, hallmarks of both Nimbus and our esteemed ambassador Mary Kom.

Legacy of Nimbus Realty

Nimbus Realty is the real estate wing of Nimbus Group operating in Delhi and NCR. Nimbus Realty has developed numerous residential and commercial projects in cities of Noida and Greater Noida. It has portfolio of 12 million sq.ft. with 12 projects.

Nimbus realty has 8500+ happy customers who have invested in their various projects. We aim to be the preferred real estate developer among investors and buyers.

Our Mission : Craft real estate projects, foster a positive work culture, and build assets benefiting all stakeholders.

Our Vision: To be India's most trusted real estate solution provider, continuously innovating for unparalleled customer satisfaction.

12
MILLION SQ.FT.

12
PROJECTS

8500+
HAPPY CUSTOMERS



ABOUT THE PROJECT

Elegant independent floors, constructed within a low-rise G+4 structure, and majestic high rise towers of 13 floors are crafted to the highest specifications, featuring unique distinctive character that exudes harmony, peaceful living, and privacy. The thoughtful design prioritizes open-plan living spaces that seamlessly extend into balconies, ensuring that natural light and air ventilation flow abundantly throughout the apartments, enhancing the sense of spaciousness and well-being.



ARTISTIC IMPRESSION



ARTISTIC IMPRESSION

CLUB

Discover your ultimate lifestyle destination at our premier club, where luxury meets comfort across an array of top-tier amenities, such as a party hall, cafeteria, kids play zone, indoor game area, library, yoga room, gym, spa, boxing ring and much more.

Join us to transform your everyday into the extraordinary—where more experiences, more activities, and a better life await.



ARTISTIC IMPRESSION



A woman with long brown hair, wearing a floral dress and a wide-brimmed hat, is lying on her back on a white lounge chair. She is holding the hat over her face with both hands. The lounge chair is positioned on a light-colored patio next to a swimming pool. The pool water is clear and blue. In the background, there are lush green plants and a wooden fence. The overall scene is bright and sunny, suggesting a warm, relaxing day.

Discover the exquisite clubhouse

Our clubhouse stands as a testament to opulent living, offering an array of amenities that cater to your every need. Here you can unwind and rejuvenate in style, surrounded by an atmosphere of sheer indulgence.

MASTER LAYOUT PLAN



LOW RISE TOWERS

- TOWER - A (1-9)
- TOWER - B (1-15)
- TOWER - C (1-14)
- TOWER - D (1-12)

LEGENDS

- | | | |
|-------------------|--------------------------|---|
| 1. ZEN GARDEN | 11. SEATING WITH TRELLIS | 21. SPORTS COURT (BADMINTON, BASKETBALL AND TENNIS) |
| 2. PERGOLA | 12. WATER FEATURE | 22. PARKING |
| 3. FRAMES | 13. GAZEBO | |
| 4. YOGA DECK | 14. SCULPTURE POINT | |
| 5. LAWN | 15. HERBAL GARDEN | |
| 6. PAVED PLAZA | 16. SAND PIT | |
| 7. STEPPING STONE | 17. KIDS PLAY | |
| 8. MOUND | 18. WATER PLAY | |
| 9. OPEN GYM | 19. OAT | |
| 10. PLANTER | 20. SWIMMING POOL | |

ARTISTIC IMPRESSION



ARTISTIC IMPRESSION



ARTISTIC IMPRESSION



BRAND ASSOCIATION

STEEL: TATA/ JINDAL/ SAIL/ JSW

CEMENT: ULTRATECH/ JK LAKSHMI/ WONDER

TILES: KAJARIA/ SOMANY/ VARMORA

SWITCH SOCKETS: ANCHOR/ HAVELLS

WIRE: POLYCAB/ HAVELLS/ ANCHOR

PLUMBING PIPES: ASTRAL/ FINOLEX/ SUPEREME

PANELS: L & T/ ABB

TRANSFORMER: SUDHIR/ ESSNAR

DG SET: JACKSON

FIRE SYSTEM: JINDAL & FITTINGS OF AGNI & SURAKSHA

PAINT: ASIAN/ DULUX

BATHROOM FITTINGS: JAGUAR/ ROCA/ CERA/ HINDWARE

LIFT: KONE/ THYSSENKRUPP/ OTIS

SPECIFICATION

INDEPENDENT FLOOR

LIVING ROOM

Wall	Plastic paint
Flooring	Vitrified Tiles(600 x 1200)mm Semi gloss finish
Ceiling	Ceiling Band As Per Design With Plastic Paint Alongwith Light
External Windows	UPVC window/Aluminium

KITCHEN

Wall	Plastic paint
Counter Top	Granite/Stone
Dado Wall	Tiles 2' above the counter
Flooring	Antiskid Tiles (600 x 1200)mm
Ceiling	PVC Panel as per design alongwith light
Sink	Double bowl SS Sink with drainboard Semi modular

LIFT LOBBY (ALL FLOORS)

Wall Paint	Plastic paint
Flooring	Granite
Ceiling	Ceiling as per design with plastic paint with light

MASTER BEDROOM

Wall	Plastic paint
Flooring	Vitrified Wooden Tile (600 x 1200)mm
Ceiling	Ceiling Band As Per Design With Plastic Paint alongwith light
External Windows	UPVC Window/Aluminium

OTHER BEDROOMS

Wall	Plastic paint
Flooring	Vitrified Tile (600 x 1200)mm
Ceiling	Gypsum ceiling band as per design with plastic paint alongwith light
External windows	UPVC Window/Aluminium

WASHROOM

Wall	Tiles Upto false ceiling lvl.
Flooring	Anti-skid Vitrified Tiles/Anti skid Ceramic Tiles (600 x 1200)mm
Ceiling	Grid ceiling as per design with light point
Vanity	WashBasin with Granite counter top

SANITARY FIXTURES

WC	Wall mounted
Fixtures & Fitting	Chrome finish fitting, Mixers
Plumbing	CPVC for water supply inside the toilet and Kitchen & UPVC pipes for stacks

STAIRCASE

Wall	OBD
Flooring	Granite
Railing	MS Railing

BALCONY

Railing	Glass Railing/MS powder coated/ parapet as design
Floor	Anti skid tile (600 x 1200)mm

DOORS

Entrance Door - 8' Ht.	Laminated flush door/skin moulded with all the required hardware & hardwood frame
Internal Door - 7.5' Ht. (Flush door)	Laminated flush door/skin moulded with all the required hardware & hardwood frame

A / C

Provision of sleeves for Split A/C

SECURITY SYSTEMS

Secured Gated Community with intercom. CCTV at suitable places with camera in all lifts.

ELECTRICALS

Modular Switches, Copper wiring with MCBs

POWER BACKUP

1 KVA

BASEMENT LOBBY

Floor	Granite
Wall & Column	OBD
Ceiling	OBD

LIFTWORK PASSENGER LIFT

CLADDING GRANITE

EXTERNAL PAINT

Weather resistant paint

SPECIFICATION

HIGH RISE APARTMENTS

LIVING ROOM

Wall	Plastic paint
Flooring	Vitrified Wooden Tiles
Ceiling	OBD
External Windows	UPVC window/Aluminium

KITCHEN

Wall	Plastic paint
Counter Top	Granite/Stone
Dado Wall	Tiles 2' above the counter
Flooring	Antiskid Tiles
Ceiling	PVC Panel as per design alongwith light
Sink	Single bowl SS Sink with drainboard Semi modular

BEDROOM

Wall	Plastic paint
Flooring	Vitrified Wooden Tile
Ceiling	OBD
External Windows	UPVC Window/Aluminium

ALL WASHROOM

Wall	Tiles upto false ceiling lvl.
Flooring	Anti-Skid Vitrified Tiles/Anti skid Ceramic Tiles
Ceiling	Grid Ceiling as per design with light point
Vanity	WashBasin with Granite counter top

ELECTRICALS

Modular Switches, Copper wiring with MCBs

SANITARY FIXTURES

WC	Wall mounted
Fixtures & Fitting	Chrome finish fitting, Mixers
Plumbing	CPVC for water supply inside the toilet and Kitchen & UPVC pipes for stacks

STAIRCASE

Wall	OBD
Flooring	Granite
Railing	MS Railing

BALCONY

Railing	Glass Railing/MS powder coated/parapet as design
Floor	Anti skid tile

DOORS

Entrance Door - 8' Ht.	Laminated flush door/skin moulded with all the required hardware & hardwood frame
Internal Door - 7.5' Ht. (Flush door)	Laminated flush door/skin moulded with all the required hardware & hardwood frame

AC

AC	1 split AC
----	------------

SECURITY SYSTEMS

Secured Gated Community with intercom.
CCTV at suitable places with camera in all lifts.

POWER BACKUP 1 KVA

LIFT LOBBY / CORRIDOR (EXCEPT GROUND FLOOR)

Wall Paint	OBD
Flooring	Granite
Ceiling	OBD

LIFT LOBBY GROUND FLOOR

Wall Paint	Plastic Paint
Flooring	Granite
Ceiling	Designer ceiling at Ground Floor only

LIFT WORK PASSENGER LIFT

Cladding	Granite
----------	---------

EXTERNAL PAINT

Weather resistant paint

FURNITURE

Bed (Queen Size)
Bed Table both Side
Sofa(2 or 3 seater)
Centre Table
Wardrobe Single
Semi-Modular Kitchen
Study table & 1 Chair
Fan (1 No.)

FLOOR PLAN

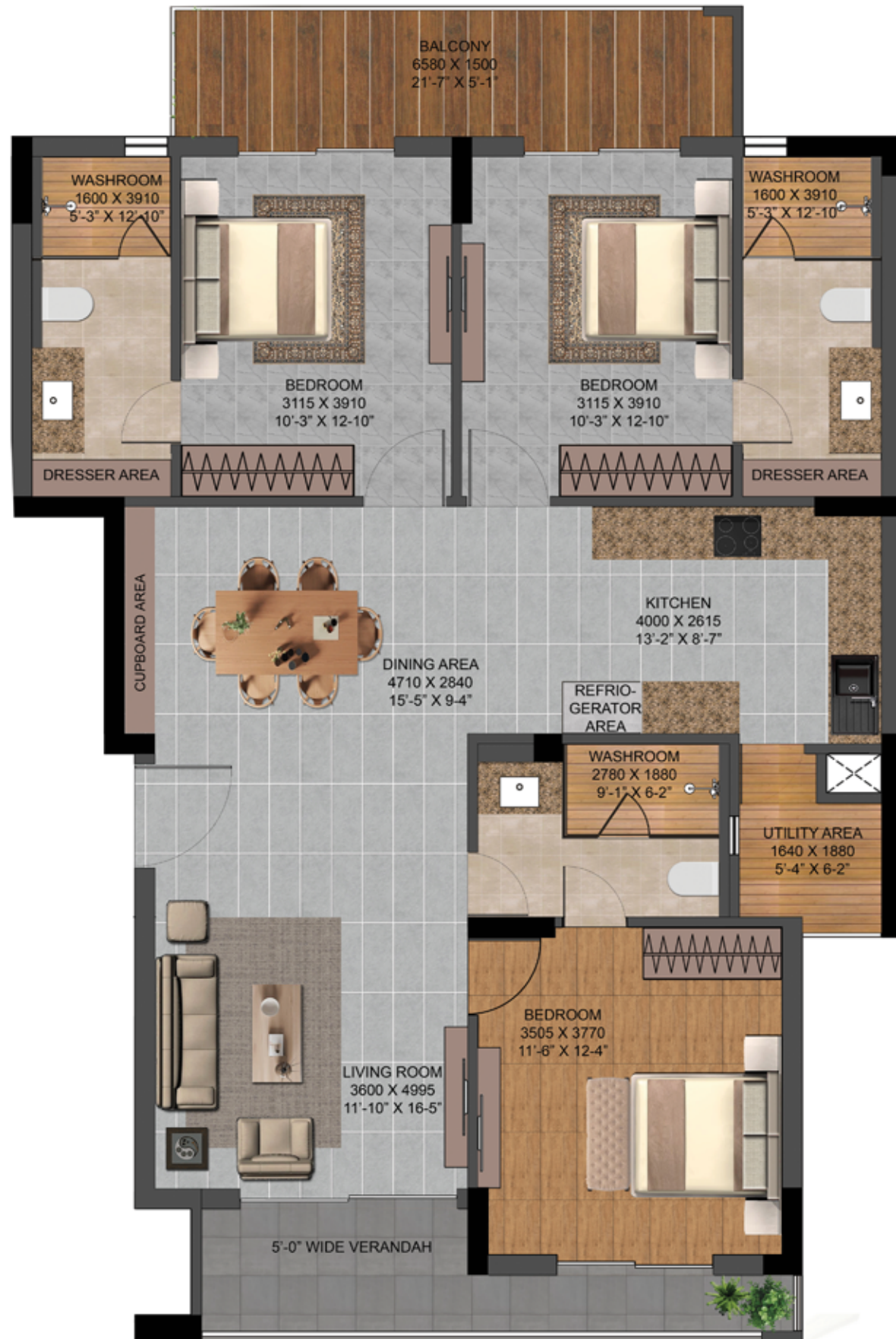


**HIGH RISE
1BHK APARTMENT**

Carpet area-23.02 SQM
Balcony-5.14 SQM

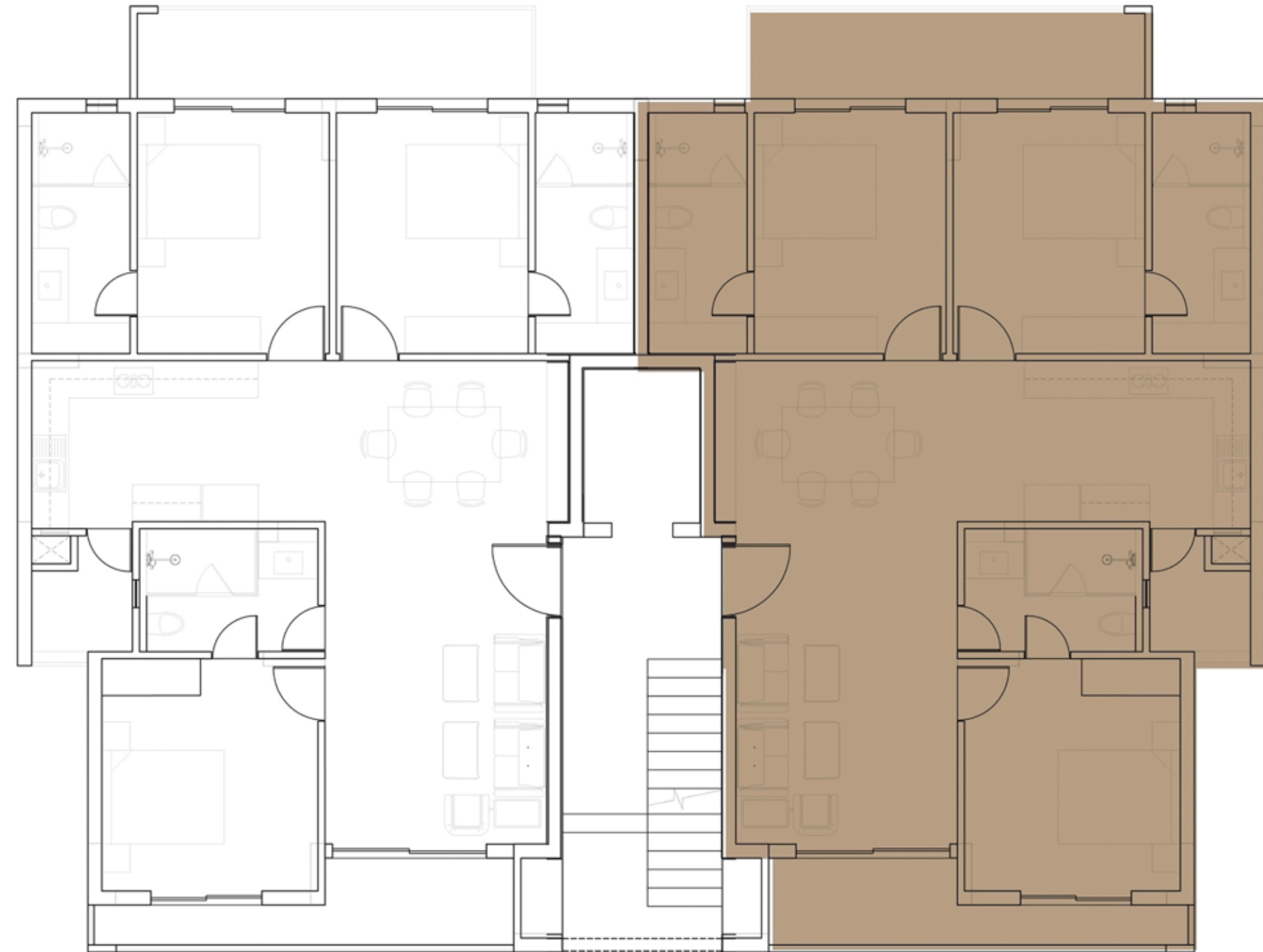
FLOOR PLAN

**3 BHK + 3 TOILET UNIT
INDEPENDENT FLOORS**



LOW RISE - TYPICAL

UNIT CARPET AREA	= 104.83 SQM
BALCONY	= 9.87 SQM
VERANDAH	= 6.76 SQM

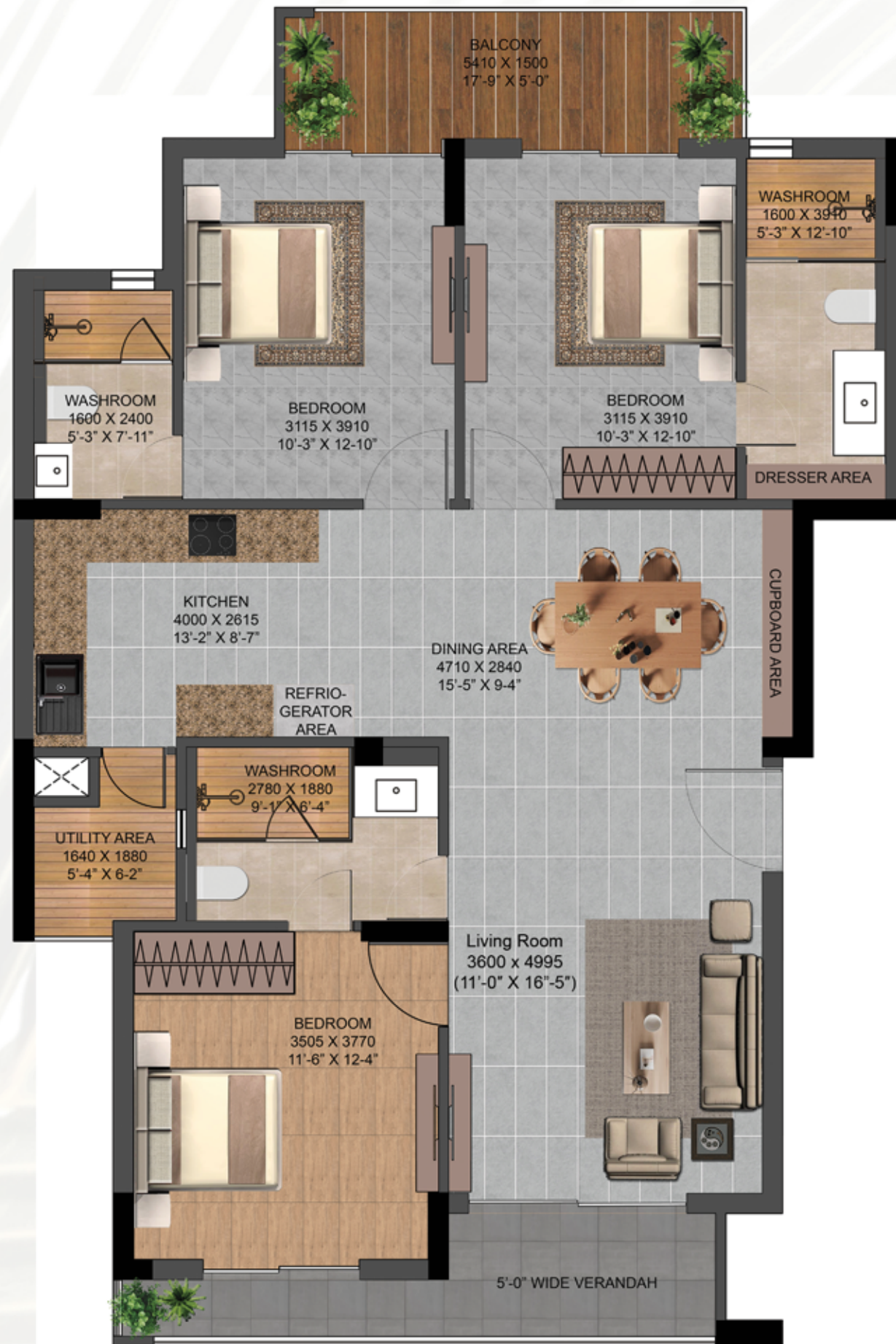


KEY PLAN

(A-1 TO A-9)
 (B-1 TO B-7, B-9 (1st WING), B-10 TO B-15)
 (C-1 TO C-14)
 (D-1 TO D-7, D-8 (1st WING), D-9 TO D-12)

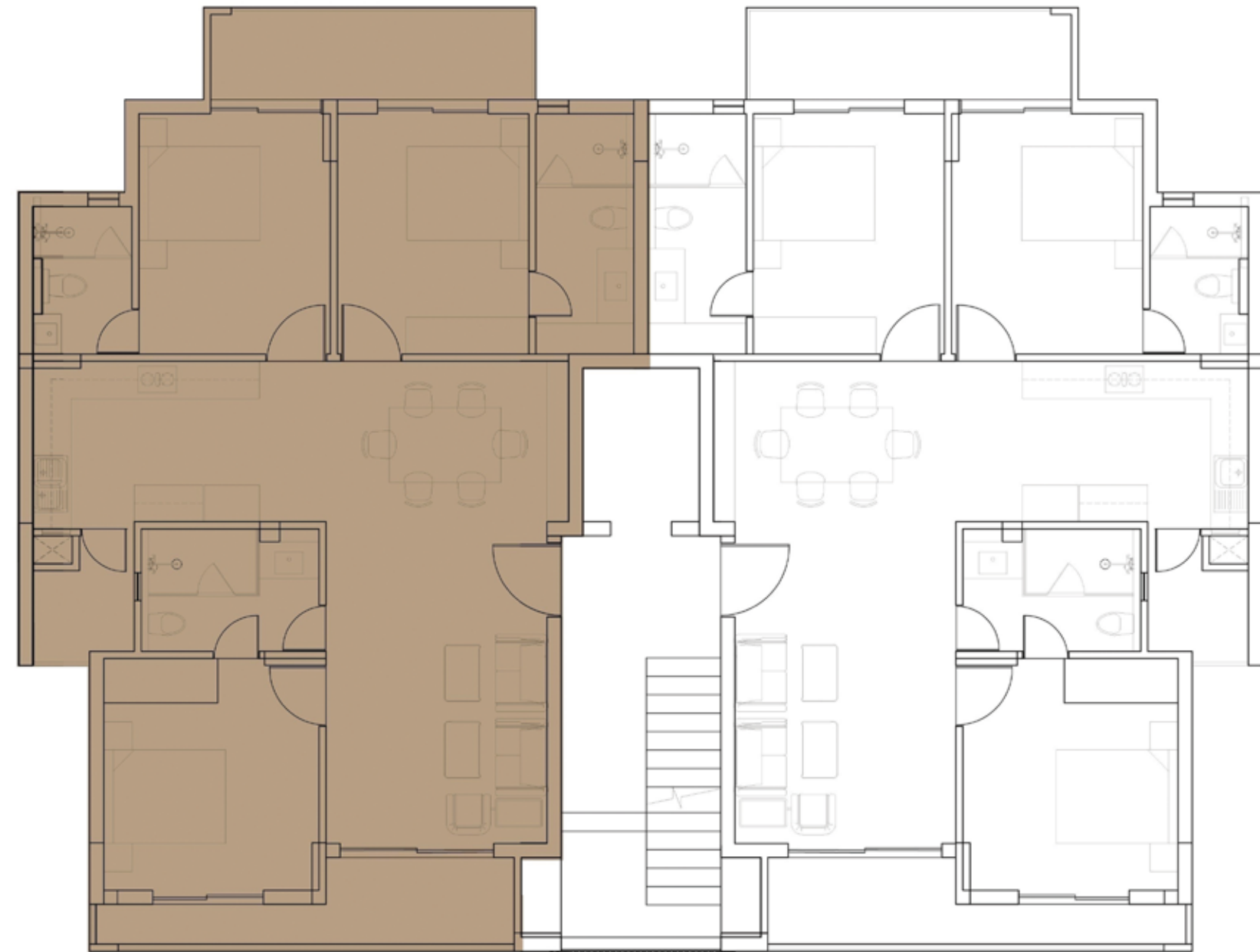
FLOOR PLAN

3 BHK + 3 TOILET UNIT
INDEPENDENT FLOORS



LOW RISE - (B-8)

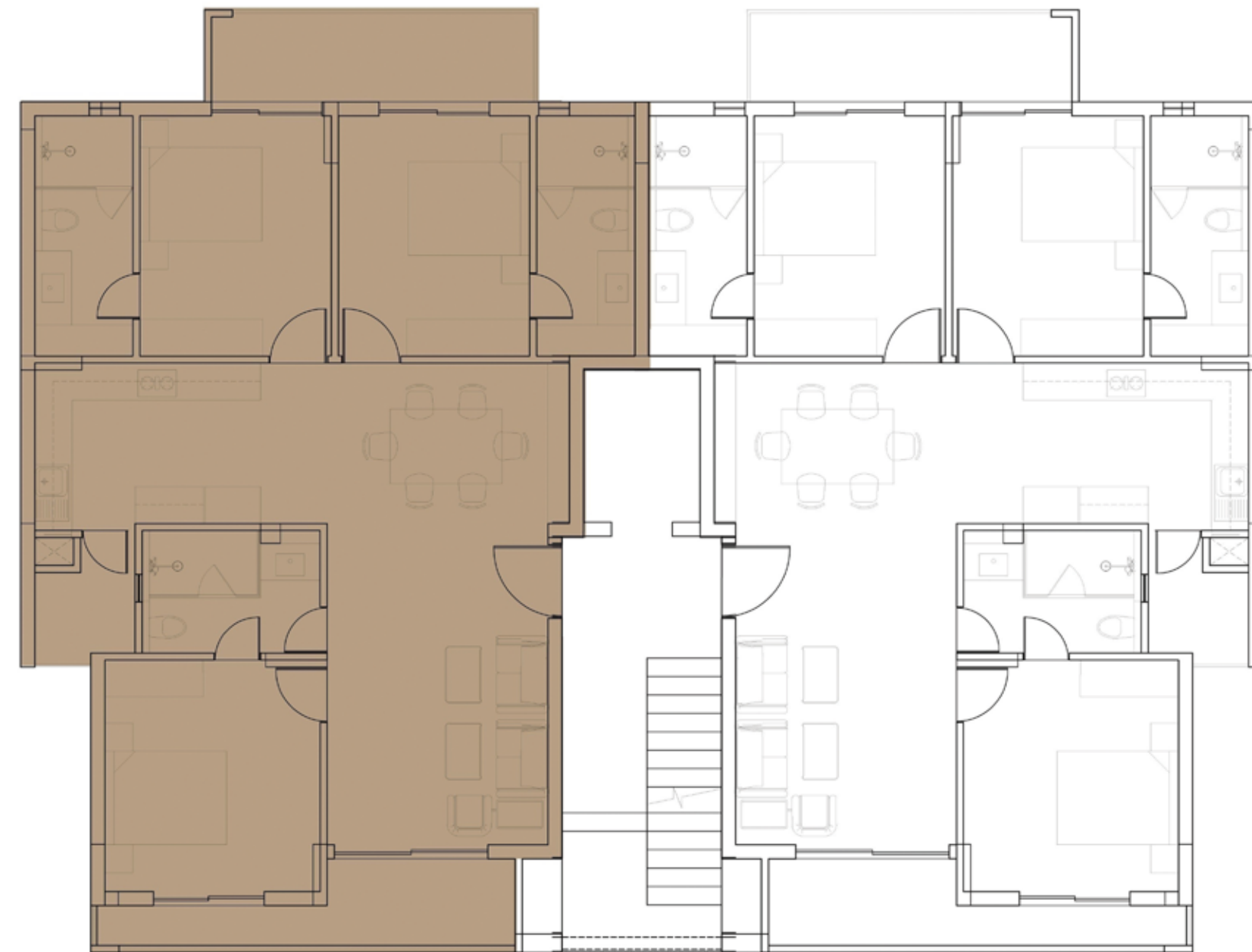
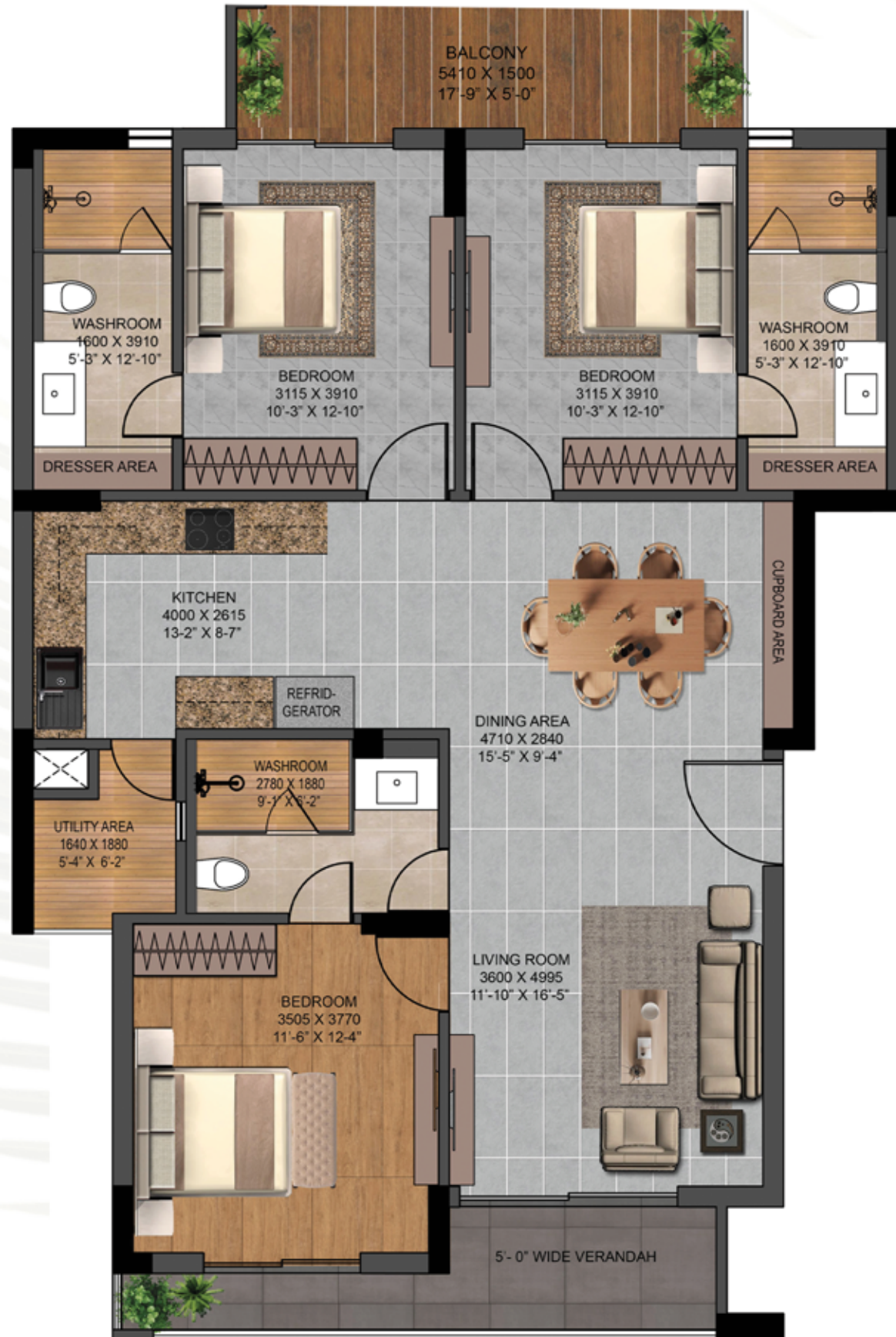
UNIT CARPET AREA	= 99.08 SQM
BALCONY	= 8.12 SQM
VERANDAH	= 6.76 SQM



KEY PLAN
(B-8)

FLOOR PLAN

**3 BHK + 3 TOILET UNIT
INDEPENDENT FLOORS**



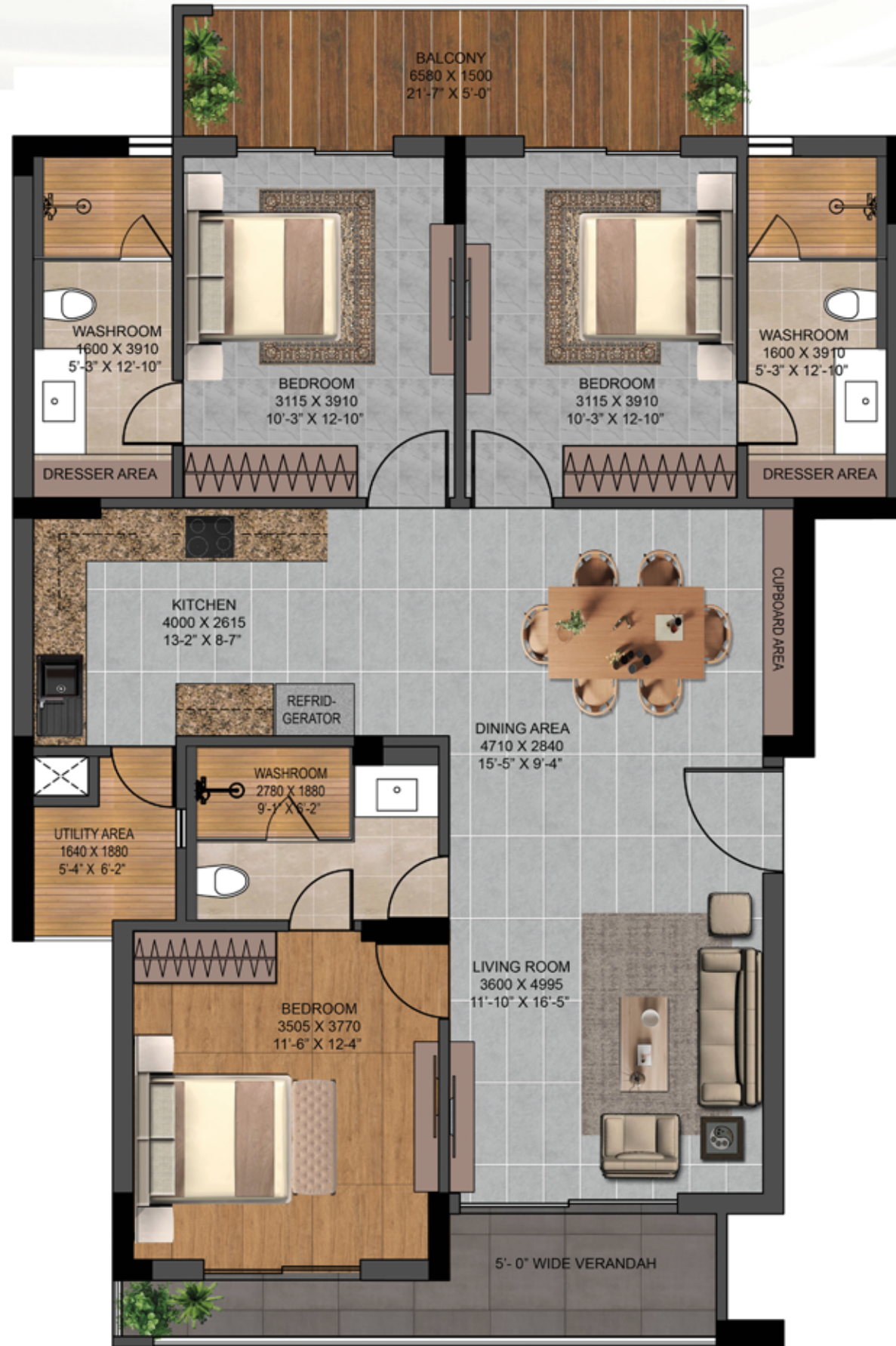
KEY PLAN
(B-9 - (2nd WING) & D-8 (2nd Wing))

LOW RISE
B-9 - (2nd WING) & D-8 (2nd Wing)

UNIT CARPET AREA	= 104.83 SQM
BALCONY	= 8.12 SQM
VERANDAH	= 6.76 SQM

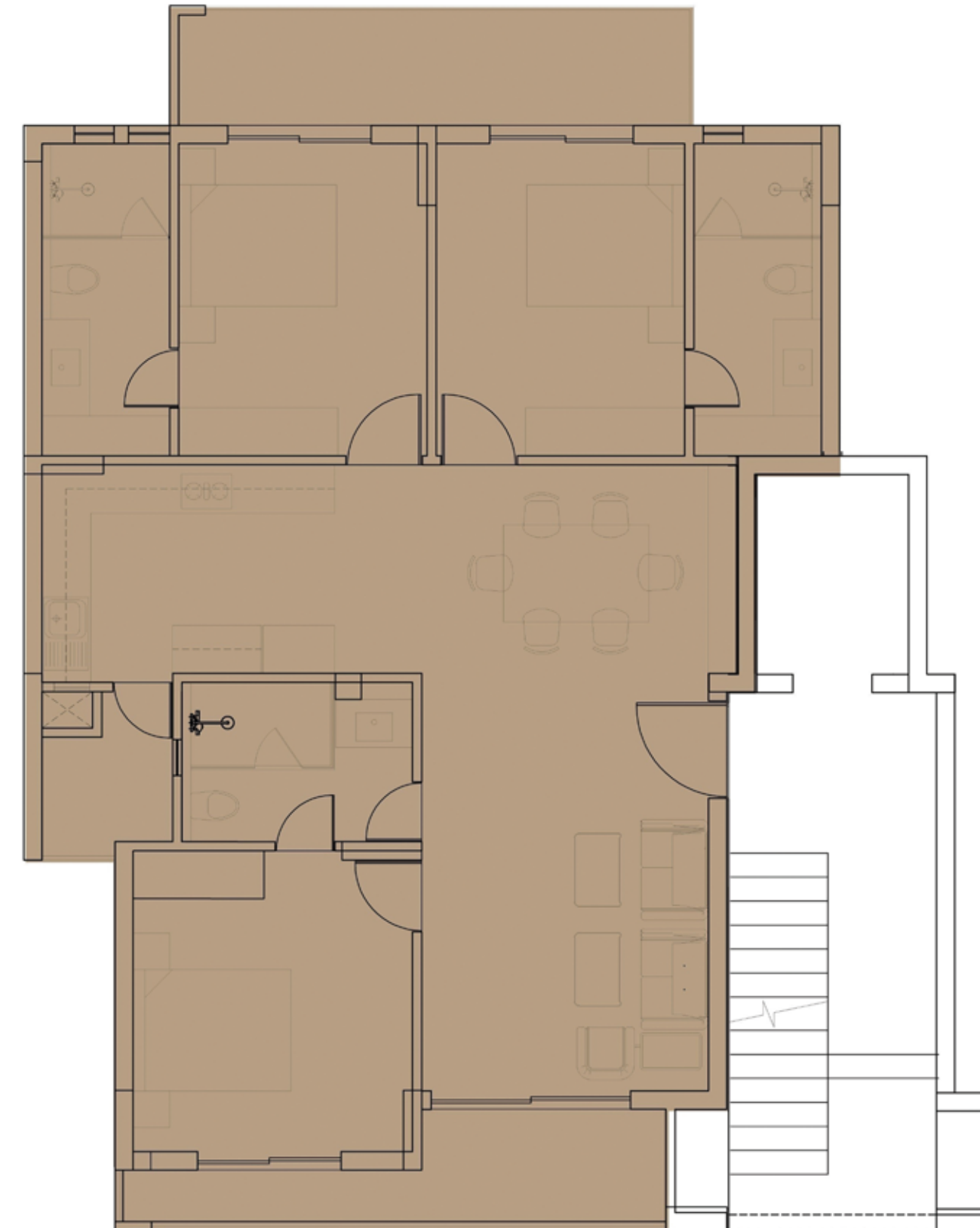
FLOOR PLAN

3 BHK + 3 TOILET UNIT
INDEPENDENT FLOORS



LOW RISE - C7 & D5

UNIT CARPET AREA = 104.83 SQM
BALCONY = 9.87 SQM
VERANDAH = 6.76 SQM



KEY PLAN
(C7 & D5)

WHY YAMUNA EXPRESSWAY?

- Noida International Airport
- Well-connected to the Delhi-Mumbai Expressway
- Home to the upcoming Olympic City & Film City
- Scenic tourist highway connecting Delhi-Noida-Agra-Lucknow
- Commercial presence including Patanjali, LG, Vivo & Bikanerwala
- Shopping extravaganza at Venice Mall & Omaxe Mall
- Upcoming city processing unit
- Upcoming Rapid Rail, Pod Taxi & Metro for easy commute
- Convenient Access via proposed Delhi-Faridabad bypass
- Proximity to Noida Extension's Business District
- Nearby IT Hubs
- Close to Sector 18 for retail and entertainment
- International cricket stadium, F1 & Moto GP track



SUCCESSFUL PROJECTS

Residential projects:

Commercial projects:

			
--	--	---	--



"Project is Mortgaged with and Funded by Bajah Housing Finance Limited, No objection certificate/ permission to mortgage from Bajah Housing Finance Limited will be provided for sale of flats"



ISO 9001:2015

Registered Office:

M/s IITL-Nimbus The Palm Village
1012, 10th Floor, Narain Manzil, 23, Barakhamba Road,
New Delhi - 110001
email id: palmvillage@nimbusgroup.net,

Site Address:

Plot No. GH03, Sector 22A, Yamuna Expressway Industrial Development Area
Distt. Gautam Buddha Nagar, Uttar Pradesh



Follow Us 
IVR NUMBER : 8010200555

Disclaimer: This is not an legal offer, an invitation to offer and/or commitment of any nature. The images include artistic impressions and stock images The details of Project, Apartment/Unit including but not limited to designs, dimensions, cost facilities, plans, images, specifications, furniture, accessories, paintings, items, electronic goods, additional fittings/fixtures, decorative items, false ceiling including finishing materials, specifications, shades, sizes and colour of the tiles and other details shown in the images are only indicative in nature and are only for the purpose of illustrating/indicating a possible layout and may not form part of the standard specifications/amenities/services to be provided in the Project, Apartment/Unit intending buyers are advised to use their discretion in relying on the information/amenities described/shown therein. All specifications of the Project, Apartment/ Unit shall be as per the documents/information uploaded by the company on the website of UPRERA and the agreement between the parties. Users are advised not to base purchasing decisions solely on promotional contents or visual depictions. For verified, updated and accurate project information please visit the official website of UPRERA.

The Promoter disclaims responsibility for any information available through third party websites, emails, social media platforms, or external links. Any reliance on such sources shall be at the user's sole risk. the promoter shall not be liable for any loss or damage resulting for such reliance. Project details, specifications and features may be modified, amended or updated without prior notice, in compliance with applicable laws and regulations.

1 sq. mtr. is equal to 10.764 sq. ft.